

CERTIFICATE OF LOCATION OF GOVERNMENT CORNER

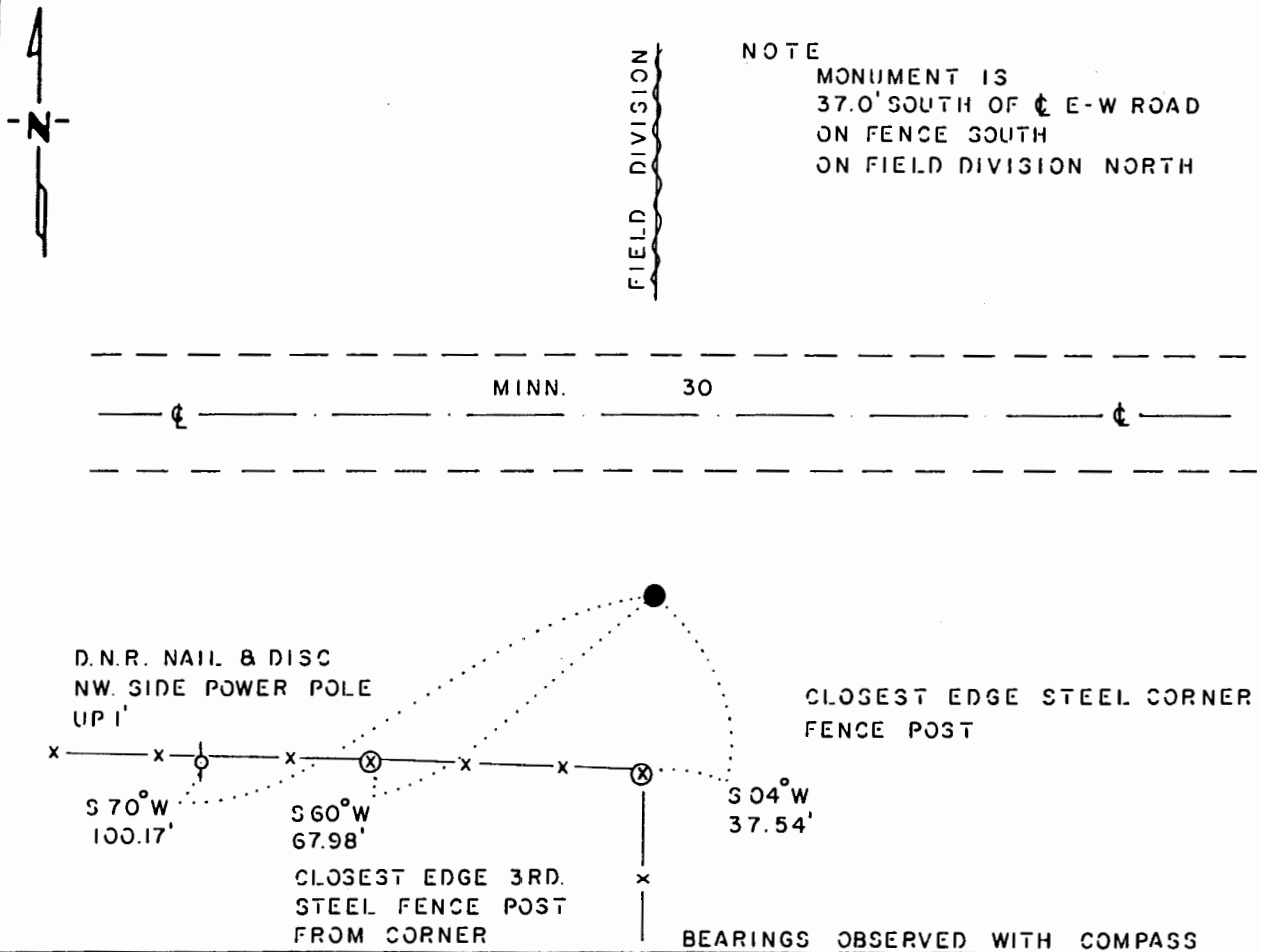
NORTH QUARTER Corner of Section 36, Township 107 N., Range 39 W., 5th P.M.

STATE OF MINNESOTA, County of MURRAY

At the corner location shown on the sketch:

- On 3-19-85 found a 12" DIAMETER CONCRETE MONUMENT WITH "X" ON TOP, DOWN 22"
DATE
 - left monument as found, lowered monument, removed monument (explain)
- On 3-19-85 placed a 1 1/4" x 1 1/4" x 20" PERFORATED STEEL TUBE WITH ALUMINUM CAP STAMPED "D.N.R. SURVEY MARKER", OVER CONC. MON. DOWN 0.2'
DATE

SKETCH OF REFERENCE TIES



Statement of evidence relative to this corner location is on back of page.

J. B. M. 10-25-85
G-1181

I hereby certify that this document and the data contained herein was prepared by me or under my direct supervision.

Lowell R. Pomeroy 11-7-85
SIGNATURE DATE

Registration No. 17005

- Land Surveyor, Professional Engineer
- County Surveyor, County Engineer

OFFICE OF THE COUNTY RECORDER

County of _____

I hereby certify that this document was filed in the Co. Recorders office at _____ .M. on the _____ day of _____ A.D., 19 _____

County Recorder _____

By _____, Deputy

DOCUMENT NO. _____

North Quarter Corner Section 36, Township 107 North, Range 39 West

This corner was originally established by the U. S. General Land Office survey in 1861. The government notes show corner marked with a wood post set in mound of earth with pits and trench dug around the mound. Also deposited charcoal and planted plum seeds northeast and southwest.

In March 1985, the DNR Bureau of Engineering contacted the following for corner information:

Murray County Offices of the Recorder and Highway Engineer
Mn/Dot Office in St. Paul
U.S. Dept. of the Interior, Fish and Wildlife Office in Minneapolis
Land Surveying Firms:
Martin Land Surveying of Worthington
Madsen Land Surveyors of Fairmont
Sioux Engineering of Windom

The following information was obtained from the County Recorder's Office:
Surveyor's Record Book, on Page 289, contains a survey by J. W. Woolstencraft, County Surveyor, dated April 11, 1924. Survey states there is a fence corner 33 feet south of the corner. Survey does not state what was found or set at the corner, but shows it 2635.2 feet from the northeast corner of Section 36.

Surveyor's Record Book, on Page 391, contains a survey by F. A. March, dated 1930's. Survey states corner is a concrete stone with ties:
reference point-tack in telephone pole, northwest 39.2 feet
reference point-tack in corner fence post, south 32.7 feet

The following information was obtained from the Mn/DOT Office in St. Paul:
The right-of-way map of Minnesota Trunk Highway 30, date not indicated, shows the corner as a stone monument in place at intersection of east-west road and fence south. Also a note is made about a replacement certificate, dated January 30, 1953, that shows a 12" concrete monument in place with ties:
reference corner fence post, 37.41 feet, south
reference steel fence post, 68.14 feet, southwest
reference power pole, 105.15 feet, southwest

The following information was obtained from the County Recorder's Office:
A certificate of replacing section corner, dated January 30, 1953, by Ralph J. Flemming, highway engineer, shows the corner is a 12" concrete monument with an "X" on top. Monument was reset 1.3 feet below ground and is 37.0 feet right of highway station 887+97.5. Ties shown are the same that appear on Trunk Highway 30 right-of-way map.

In March 1985, the DNR Bureau of Engineering traversed to the area of the corner and found a 12" diameter concrete monument with "X" on top down 22". Monument is on fence line south, field division north and measures:

37.0 feet south of center line Highway 30
2629.89 feet from the northeast corner Section 30

Found record ties as shown.

Accept the concrete monument as the location for the corner.

Traverse information is available from the DNR Bureau of Engineering.